

Crochet A Sweet,

HEART•BEDECKED AFGHAN

Free pattern ahead!



The Look of Love

{CREATIVE INSPIRATIONS *free* FROM HOBBY LOBBY®}

Skill:

Easy

Size:

34" wide x 48" long


Crochet Hook:

Size K-10 1/2 (6.5 mm)

Abbreviations:

ch – chain
dc – double crochet
lp(s) – loop(s)
rep – repeat
rnd – round
sc – single crochet
sl st – slip stitch
st – stitch
yo – yarn over

Materials:

- Yarn Bee® Cameo Bulky (shown in Quartz Crystal and Carnelian), 3 oz. skeins of 74 yards
 Color 1 (A) – 5 skeins
 Color 2 (B) – 5 skeins
-  Super Bulky
- Yarn needle



Directions:

• CHANGING COLORS

Work last st before color change to last step; with new color, yo and pull new color through remaining lps on hook (see Fig. 1). Do not work over unused color.

• BLOCK 1 (MAKE 18)

Row 1 (right side): With A, ch 14, sc in second ch from hook and in each ch across. (13 sc)

Row 2: Ch 1, turn, sc in each sc across. (13 sc)

Row 3: Ch 1, turn, sc in next 6 sc, drop A and change to B (see changing colors), sc in next sc, drop B and change to A, sc in next 6 sc. (13 sc)

Rows 4-12: Following Fig. 2 and changing colors as indicated, complete block. At the end of row 12, finish off.

Edging Rnd: With right side facing, join B with sl st in first sc of row 12, ch 1, 3 sc in same st, sc in each sc across to last sc, 3 sc in last sc; * working along edges of rows, work 11 sc evenly across; * working in unused lps of starting ch, 3 sc in first lp, sc in each lp across to last lp, 3 sc in last lp; rep * to *; join with sl st to first sc. Finish off, leaving long end.

• BLOCK 2 (MAKE 17)

Rep instructions for Block 1, reversing A and B.

• ASSEMBLY

Using long ends and yarn needle, and using Fig. 3 as a guide, sew blocks together 5 across x 7 down.

• AFGHAN EDGING

With right side facing, join B with sl st to center sc of any 3-sc corner of afghan, ch 3 (counts as first dc) (dc, ch 2, 2 dc) in same sc, dc in each sc across to corner, * (2 dc, ch 2, 2 dc) in center sc of 3-sc corner, dc in each sc across to next corner; rep from * twice more; join with sl st to first dc. Finish off, and weave in ends.

Fig. 1



Fig. 2

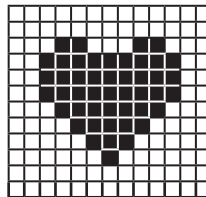


Fig. 3

1	2	1	2	1
2	1	2	1	2
1	2	1	2	1
2	1	2	1	2
1	2	1	2	1
2	1	2	1	2
1	2	1	2	1

We have made every effort to ensure that the provided pattern is accurate and complete. We cannot, however, be responsible for human error, typographical mistakes or variations in individual workmanship.