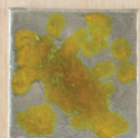
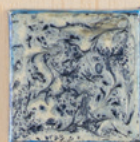
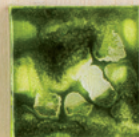
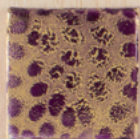


# PĒBĒO PAINTS



are versatile and  
can make anyone an  
artist. So try them  
on everything from  
handmade jewelry to  
home décor.



We've got over  
**20** DESIGN  
IDEAS  
inside!

mixed media masterpiece

{ CREATIVE INSPIRATIONS *free* FROM HOBBY LOBBY. }



## JEWELED INTENTIONS

When you're new to these seemingly magical paints, you'll want some nothing-to-it pieces that still deliver gorgeous results. That's where these beginner jewelry projects come in. Pick up these paints to make your own fairytale-esque creations. *Tip: For a little extra sparkle, try adding drops of Glitter Medium.*

### **KNOBS:** Level 1

Fantasy Prisme—Pearl Violine  
Vitrail—Parma

### **NECKLACE:** Level 1

Fantasy Prisme—Pearl Violine  
Fantasy Moon—Pearl, Veil of Smoke, Metal Blue, Carmin

### **COMPACT:** Level 1

Fantasy Prisme—Pearl Violine  
Fantasy Moon—Pearl

### **BRACELETS:** Level 1

Fantasy Prisme—Pearl Violine, Eggshell White  
Fantasy Moon—Sand





## HERE ARE THE BASICS:

Welcome to the wonderful world of Pêbêo paints and products. Come in and stay a while—but first, let us show you the lay of the land. We've determined each project's skill level based on the paints and products used. Refer to this chart when you need a refresher.

**LEVEL 1:** Beginner—Fantasy Prisme + Fantasy Moon + Vitrail

**LEVEL 2:** Intermediate—Fantasy Prisme + Fantasy Moon + Vitrail + Cerne Relief

**LEVEL 3:** Advanced—Fantasy Prisme + Fantasy Moon + Vitrail + Cerne Relief + Mediums + Resins + Foil + Glitter

## A LITTLE INFO TO GET YOU STARTED:

**FANTASY PRISME:** paints that create a marbled, honeycomb-like effect

**FANTASY MOON:** paints that create a textured effect with a smooth, pearly finish

**VITRAIL:** paints that create a stained glass effect

**CERNE RELIEF:** dimensional paints used to outline and create barriers for liquid paints

**MIXTION RELIEF:** used for applying metal leaf and flakes

## COLOR CREW

**A:** Level 1

Fantasy Prisme—Vermillion, Midnight Blue, Pearl Violine

Fantasy Moon—Veil of Smoke, Gold, Turquoise, Carmin, Salmon, Pearl, Metal Blue

Vitrail—Gold, Green Apple, Sky Blue

**B:** Level 2

Fantasy Prisme—Pearl Violine, Eggshell White, Onyx, Moonstone, Emerald, Vermillion

Fantasy Moon—Veil of Smoke, Silver, Ebony

Vitrail—Pewter

Cerne Relief—Gold

**C:** Level 1

Fantasy Prisme—Caribbean Blue

Fantasy Moon—Veil of Smoke

**D:** Level 1

Fantasy Prisme—Moonstone

Fantasy Moon—Ebony

*Tip: Be sure to level paint surface before working then apply Gorilla Tape™ to edge. Remove when dry. This will keep your paint from running over the edges.*



Use these enticing paints on a plethora of pieces—from the fun to the functional—and you'll soon have an ahh-inducing space. For an easy-does-it approach, don't mix or swirl the paints once applied. Just let them do their thing. The result? Calm, cool and fabulous!

**BURLAP CANVAS TREE:** Level 2

**WOODEN "A":** Level 1

**OWL:** Level 2



## SERENE SCENE

## LIGHTEN UP (Level 2)

Here's an illuminating idea: customize a glass jar lamp with Pēbēo paints. Just place your design template inside the glass and trace the pattern with Cerne Relief. Then, working one section at a time, fill in the designs as desired. Paints used: Vitrail—Light Green, Sky Blue, Ocean Blue, Deep Blue, Turquoise



## PEARADISE (Level 2)

This scrumptious still life will freshen up any room that needs a little pop of color. Begin by outlining your shape with Cerne Relief. Then just add your mouthwatering colors. Now there's a piece of artwork you can sink your teeth into. Paints used: Vitrail—White, Super White, Lemon, Apple Green, Brown



## FAIR FEATHER (Level 3)

We answered the call of the wild, and it said these metallic feathers are naturally stunning! To get this wispy look, we applied modeling paste over a feather stencil (Papercrafting Dept.) and then used Mixtion Relief where we wanted foil accents. Then we added the foil and let our creativity fly.



## TRUE TO TEXTURE

Don't be afraid to try painting on a variety of textures. Besides the usual suspects—like glass and jewelry bezels—we created one-of-a-kind art on painting panels, canvases (mini, wood, burlap), textured tile and more. The stunning array of mediums and effects will keep your inner artist in permanent residence.

**DOOR ON CANVAS:** Level 3

**MINI CANVASES:** Level 1

**TREE BRANCHES:** Level 2

**TEXTURED TILE:** Level 3





## OCEAN POTION (Level 3)

Keep memories of last summer's beach vacation near and dear with a piece of under-the-sea jewelry. Use Texture Gel to make sand, draw nautical shapes with Cerne Relief, and add paints as desired. What time is it? It's maritime! Paints used: Fantasy Prisme—Turquoise, Emerald



## HORSIN' AROUND (Level 3)

Got a quirky accent piece that needs a little pick me up? It's Pêbêo to the rescue once again! We outlined this deep sea cutie with a self-adhesive lead strip and used White Sand Texture Gel to create the telltale ridges. Then we sealed it with a layer of resin. Now it lives on the mantel instead of on the sea floor.

## A, B, SEA

Sea creatures aren't so scary when they're colorful and crowned! Play around with different products (like Texture Gel and Cerne Relief) and paints (like a mixture of Prisme and Moon) to create a whole school of ocean-loving pals.

### OCTOPUS: Level 2

Fantasy Prisme—Vermillion, Caribbean Blue, Buttercup  
Fantasy Moon—Veil of Smoke, Apricot  
Cerne Relief—Silver

### CRAB: Level 3

Vitrail—Ocean Blue  
Texture Gel—Yellow Sand, White Sand

