



granny's  
got a  
brand  
new bag,  
and it's  
anything  
but  
square!

» Read on for style-toting  
patterns and instructions.

totes chic

{ CREATIVE INSPIRATIONS *free* FROM HOBBY LOBBY. }

# hue do you love »

When somebody asks your favorite color, you respond, "All of the above." That definitely makes this splashy crocheted tote your bag. We have eight trendy hues going on here—enough to ensure no two hexagons are exactly alike.



# dream «come blue

Tucking your tablet in for the night? It'll have sweet dreams in a cushy crocheted storage sleeve. Ours features ten simple granny hexagons, all in a solid shade of soothing blue. *Design idea: decorative buttons (choose your favorites) at the points.*

# hue do you love

**Skill Level:** Easy

**Supplies:**

Yarn Bee® I Love This Yarn! (shown in Peacock, Hot Rose, Turquoise, Mixed Berry, Limelight, Yellow, Black and Antique White), 7 oz. skeins of 355 yds.

Color 1 (A) – 1 skein

Color 2 (B) – 1 skein

Color 3 (C) – 1 skein

Color 4 (D) – 1 skein

Color 5 (E) – 1 skein

Color 6 (F) – 1 skein

Color 7 (G) – 1 skein

Color 8 (H) – 1 skein



**Crochet Hook:** Size G-6 (4 mm)

**Special Stitches**

**Cluster** – Yo, insert hook into indicated st, pull up a lp, yo, pull through 2 lps on hook, yo and insert hook into same st, yo, pull up a lp, yo and pull through 2 lps on hook, yo and pull through rem 3 lps on hook.

**Shell** – 3 dc into same st.

**Grunny Hexagon (Make 26)**

Using first color of your choice, ch 4, sl st to form a ring.

**Row 1:** Ch 3 (counts as first dc now and throughout), 11 dc into ring (12 dc total). Sl st to join in beg ch 3.

**Row 2:** Attach new color in any st, [ch 2, 1 dc] into same st (counts as 1 cluster), ch 1, \*1 cluster, ch 1, rep from \* around (12 clusters total). Sl st to join in beg ch 2.

**Row 3:** Attach new color in any ch 1 sp, [ch 3, 2 dc] into same st (counts as first shell), ch 1, \*1 shell in next ch sp, ch 1, rep from \* around (12 shells total). Sl st to join in beg ch 3.

**Row 4:** Attach new color in any ch 1 sp, ch 1, 1 sc into same sp, ch 3, \*1 sc into next ch sp, ch 3, rep from \* around (12 sc total). Sl st to join in beg sc.

**Row 5:** Ch 3, [2 dc, ch 2, shell] into same ch 3 sp

(first corner made), shell into next ch 3 sp, \*[shell, ch 2, shell] into next ch 3 sp (corner made), shell in next ch 3 sp, rep from \* around (6 corners made). Sl st to join in beg ch 3.

Finish off and weave in ends.

**Strap (Make 2)**

Using A, ch 12.

**Row 1:** 1 sc in second ch from hook and in each ch across.

**Row 2:** Ch 1, turn, 1 sc in each st across.

Rep rnd 2 until strap measures 20 1/2" in length. Finish off and weave in ends.

**Assembly**

Sc hexagons together as shown in Diagram A (page 12), creating 2 panels. With coordinating yarn and right sides facing, align panels A and B at top points and sc sides and bottom together along dotted line.

Using A, sc evenly around top of bag.

Sc ends of straps to top points of bag.

# dream come blue

**Skill Level:** Easy

**Supplies:**

Yarn Bee® I Love This Chunky! (shown in Midnight Teal), 3.5 oz. skeins of 109 yds.

Color 1 (A) – 3 skeins

Yarn needle



**Crochet Hook:** Size G-6 (4 mm)

**Special Stitches:** cluster and shell

**Grunny Hexagon (Make 10)**

Rep "Hue Do You Love" pattern (left) without switching colors.

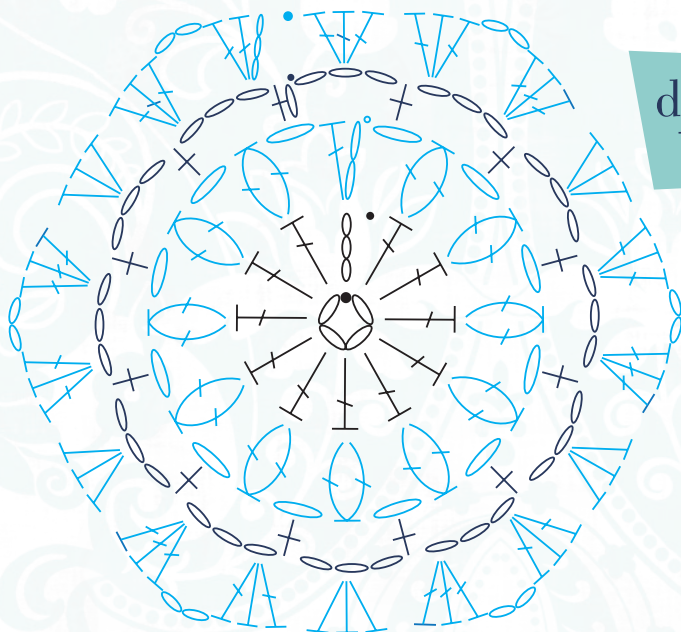
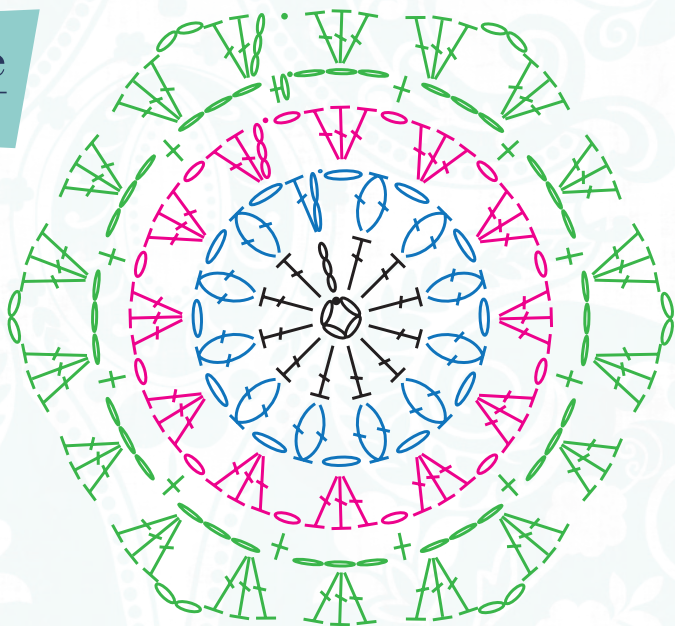
**Assembly**

Sc hexagons together as shown in Diagram B (page 12), creating 2 panels. With coordinating yarn and right sides facing, align panels A and B at top points and sc sides and bottom together along dotted line.

Using yarn needle and yarn, stitch decorative buttons at top points of bag.

# hue do you love

granny hexagon chart



# dream come blue

granny hexagon chart

## Stitch Key

• - slip stitch (sl st)

○ - chain (ch)

⌋ - double crochet (dc)

⌋⌋ - cluster

⌋⌋⌋ - shell

# some like it dot »

If you play your patterns right, your granny square tote can hop right past cutesy—and on into hipster-ville. Choose a sparse (*but interesting*) color scheme for this look. Then use our free instructions to help you crochet your own take on the design.



# twist of « turquoise

For an even simpler twist on our granny square totes, skip the color changes. Find one yarn that makes your heart sing, and turn it into a monochromatic masterpiece—this pattern has plenty of texture to amp up a pretty, one-note design.

# some like it dot

**Skill Level:** Easy

**Supplies:**

Yarn Bee® I Love This Cotton! (shown in Aqua, Ivory, Dark Denim and Orangeade), 3.5 oz. skeins of 180 yds.

Color 1 (A) – 1 skein

Color 2 (B) – 2 skeins

Color 3 (C) – 1 skein

Color 4 (D) – 1 skein

Yarn needle



**Crochet Hook:** Size G-6 (4 mm)

**Granny Square**

*Note: Crochet 6 of each square with the color combinations below (starting from the center out).*

**Square 1:** A, D, C, B

**Square 2:** B, A, D, C

**Square 3:** D, C, B, A

**Square 4:** C, B, A, D

Ch 4, sl st to form a ring.

**Rnd 1:** Ch 3 (counts as first dc now and throughout), 11 dc in ring (12 dc total). Sl st to join in third ch of first ch 3.

**Rnd 2:** Ch 3, 2 dc in each st (24 dc total). Sl st to join in third ch of first ch 3.

**Rnd 3:** Ch 3, \*2 dc in same st, 1 dc in next st\*, rep from \* to \* around (36 dc total). Sl st to join in third ch of first ch 3.

**Rnd 4:** Ch 3, [1 dc, ch 2, 2 dc] in same st (first corner made), 1 dc in next st, 1 hdc in each of next 2 sts, 1 sc in each of next 2 sts, 1 hdc in each of next 2 sts, 1 dc in next st (1 side made), 3 dc in 1 st, 1 dc in next st, 1 hdc in each of next 2 sts, 1 sc in each of next 2 sts, 1 hdc in each of next 2 sts, 1 dc in next st\*, rep from \* to \* 2 more times. Sl st to join in third ch of first ch 3. Finish off and weave in ends.

**Strap**

Using B, ch 13, 1 sc in second ch from hook and each st across (12 sc). \*Ch 1, turn, 1 sc in each st across, rep from \* until piece measures approx. 79" in length. Finish off and weave in ends.

**Assembly**

**Front and Back Panels:**

With coordinating yarn, sc the squares together (4 squares per row, 3 rows total, forming a rectangle). Rep for back panel. Using B, sc evenly around all 4 sides of each panel. Finish off.

**Attach Strap:**

Using B and right sides of panels facing, sc sides of strap to sides and bottom of panels (making sure to leave the top open). Finish off.

*Tip: It helps to pin the strap in place before stitching it to the panels.*

**Finish:**

Weave in ends and turn bag right side out.



# twist of turquoise

**Skill Level:** Easy

**Supplies:**

Yarn Bee® I Love This Yarn! (shown in Turquoise), 7 oz. skeins of 355 yds.

Color 1 (A) – 2 skeins

Yarn needle



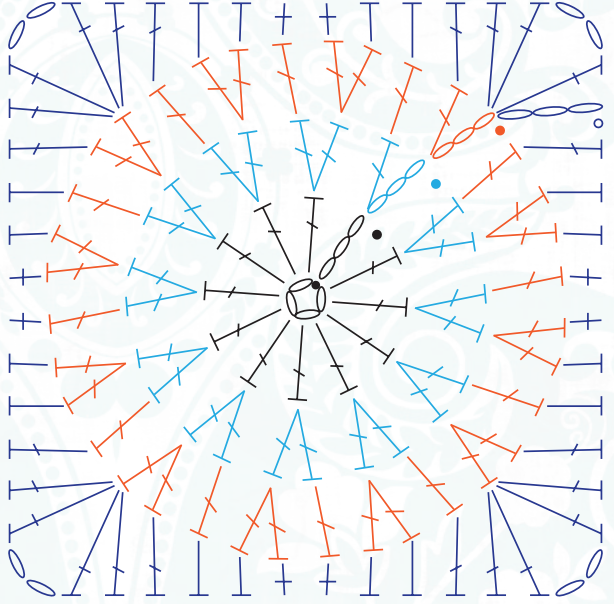
**Crochet Hook:** Size G-6 (4 mm)

**Granny Square (Make 24)**

Rep "Some Like It Dot" pattern and strap (left) and assembly (above) without switching colors.

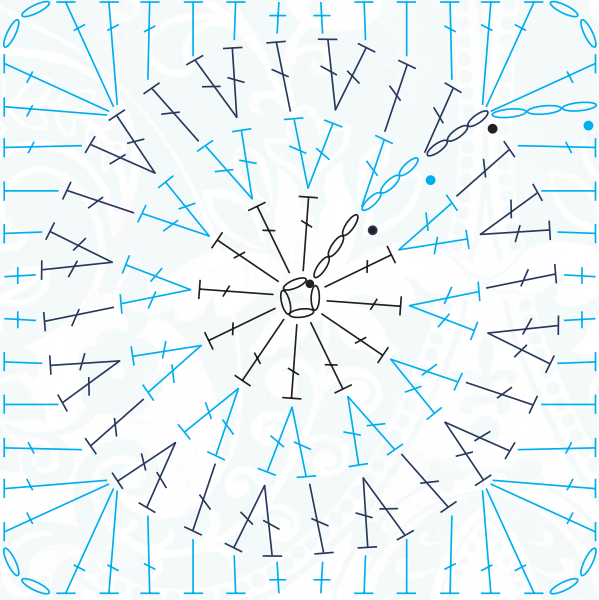
# some like it dot

granny square chart



# twist of turquoise

granny square chart



### Stitch Key

- - slip stitch (sl st)
- - chain (ch)
- ⊕ - single crochet (sc)
- ⊥ - half double crochet (hdc)
- ⊞ - double crochet (dc)

### Strap/Sides



# knapsack « or never

Here's a groovy way to tote your granny squares: a hip drawstring knapsack. This sassy carryall features six squares, joined to create a band of kaleidoscope style color. Follow our free instructions to rock your own version of the design.

**Skill Level:** Easy

**Supplies:**

Yarn Bee® I Love This Chunky! (shown in Espresso, Sand Frost, Fern, Dawn Rose and Pearl Gray), 3.5 oz. skeins of 109 yds.



Bulky

Color 1 (A) – 1 skein

Color 2 (B) – 1 skein

Color 3 (C) – 1 skein

Color 4 (D) – 1 skein

Color 5 (E) – 1 skein

Yarn needle

**Crochet Hook:** Size K-10 ½ (6.5 mm)





# knapsack or never

## Special Stitches

**Increase (inc)** – Work 2 dc into same st.

**Shell** – Work 3 dc in same sp as indicated.

## Granny Square (Make 6)

Using D, ch 4, sl st to form a ring.

**Rnd 1:** Ch 3 (counts as first dc now and throughout), 2 dc into ring, ch 2, \*3 dc into ring, ch 2, rep from \* twice more. Sl st to join in beg ch 3.

**Rnd 2:** Sl st over to ch sp, [ch 3, 2 dc, ch 2, 3 dc] into same sp, ch 1, \*[3 dc, ch 2, 3 dc] into next sp, ch 1, rep from \* twice more. Sl st to join in beg ch 3.

**Rnd 3:** Attach A in any ch 2 sp, [ch 3, 2 dc, ch 2, 3 dc] into same sp, ch 1, 3 dc in next ch 1 sp, ch 1, \*[3 dc, ch 2, 3 dc] into next ch 2 sp, ch 1, 3 dc in next ch 1 sp, ch 1, rep from \* twice more. Sl st to join in beg ch 3.

Finish off and weave in ends.

## Assembly

Using A, sc sides of squares together to make a band.

Using A, finish the band as follows:

**Rnd 1:** Ch 1, 1 sc in each st around. Sl st to join in beg ch.

**Rnd 2:** Rep rnd 1.

## Top of the body:

**Rnd 1:** Attach A in any st along top of granny square band, ch 1, 1 sc in each st around. Sl st to join in beg ch.

**Rnd 2:** Rep rnd 1.

**Rnd 3:** Attach B, ch 3 (counts as first dc now and throughout), 2 dc in same st as ch 3, sk 2 sts, \*shell in next st, sk 2 sts, rep from \* around. Sl st to join in top of beg ch 3.

**Rnd 4:** Attach C into any sp bet shells, [ch 3, 2 dc] in same sp, \*shell in next sp, rep from \* around. Sl st to join in top of beg ch 3.

**Rnd 5:** Attach B in any sp bet shells, [ch 3, 2 dc] in same sp, \*shell in next sp, rep from \* around. Sl st to join in top of beg ch 3.

**Rnd 6:** Sl st to next sp, [ch 3, 2 dc] in same sp, \*shell in next sp, rep from \* around. Sl st to join in top of beg ch 3.

**Rnd 7:** Rep rnd 6.

**Rnd 8:** Attach C in any st, ch 1, 1 sc in each st around (63 sts total). Sl st to join in beg ch.

**Rnd 9:** Ch 1, 1 sc in each st around.

**Rnd 10:** Ch 1, 1 sc in first st, \*sk 1, 1 sc in next st, rep from \* until last 2 sts, sk 2 sts. Sl st to join in beg ch.

**Rnd 11:** Rep rnd 9.

Finish off and weave in ends.

To make the other end of the bag, rep rnds 1-7 above on the other side of the band. Finish off and weave in ends.

## Bottom:

Ch 4, join with sl st to form a ring.

**Rnd 1:** Ch 3 (counts as first dc now and throughout), 11 dc in ring (12 dc total). Sl st to join in top of beg ch 3.

**Rnd 2:** Ch 3, 1 dc in same st, 2 dc in each st around (24 dc). Sl st to join in top of beg ch 3.

**Rnd 3:** Ch 3, 1 dc in same st, 1 dc in next st, \*inc in next st, 1 dc in next st, rep from \* around (36 dc). Sl st to join in top of beg ch 3.

**Rnd 4:** Ch 3, 1 dc in same st, 1 dc in next 2 sts, inc in next st, \*1 dc in next 3 sts, inc in next st, rep from \* around (48 dc). Sl st to join in top of beg ch 3.

**Rnd 5:** Ch 3, 1 dc in same st, 1 dc in next 3 sts, inc in next st, \*1 dc in next 4 sts, inc in next st, rep from \* around (60 dc). Sl st to join in top of beg ch 3.

**Attach the bottom of bag:** Turn the body of the bag inside out and sc the bottom to the body with B, making sure the right side of the bottom is facing inside (so when it's flipped right side out, the wrong side of the bottom will be inside). Finish off and weave in ends.

**Drawstring:** Using C, ch until 28" long. Finish off and weave in ends.

## Strap:

Using C, ch 7.

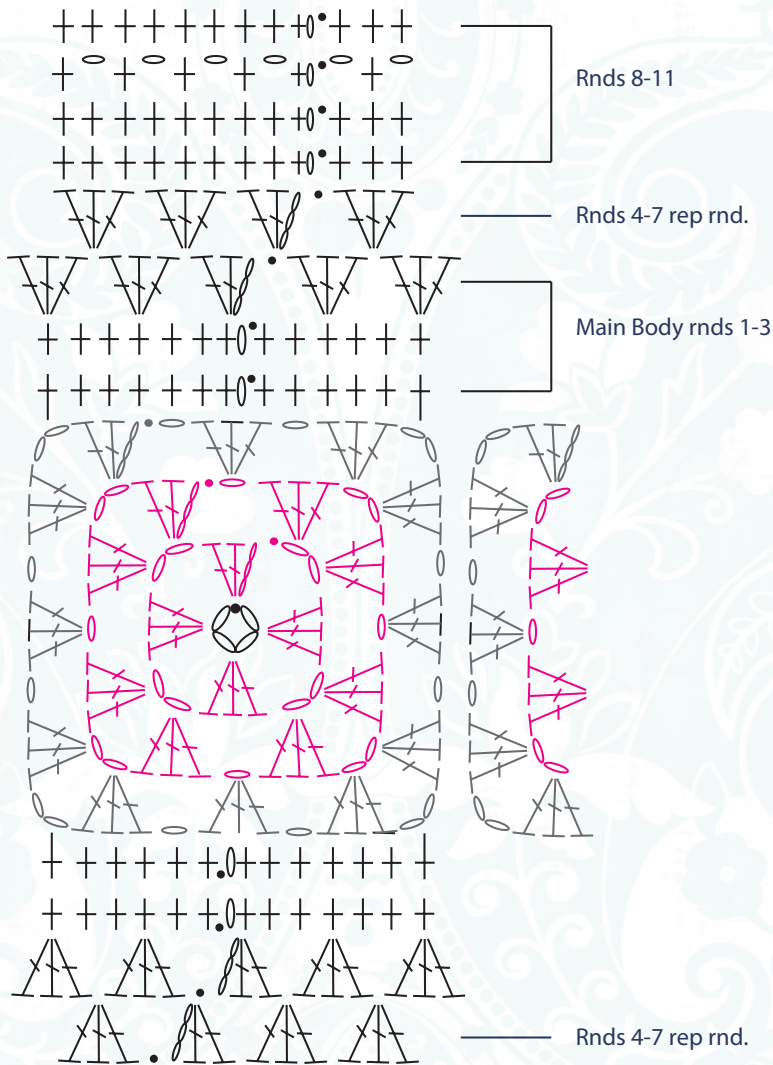
**Row 1:** 1 sc in second ch from hook and in each st across.

**Row 2:** Ch 1, turn. 1 sc in each st across.

Rep row 2 until strap measures 25". Finish off and weave in ends. With yarn needle, stitch ends of strap to bag.

# knapsack or never

granny square chart

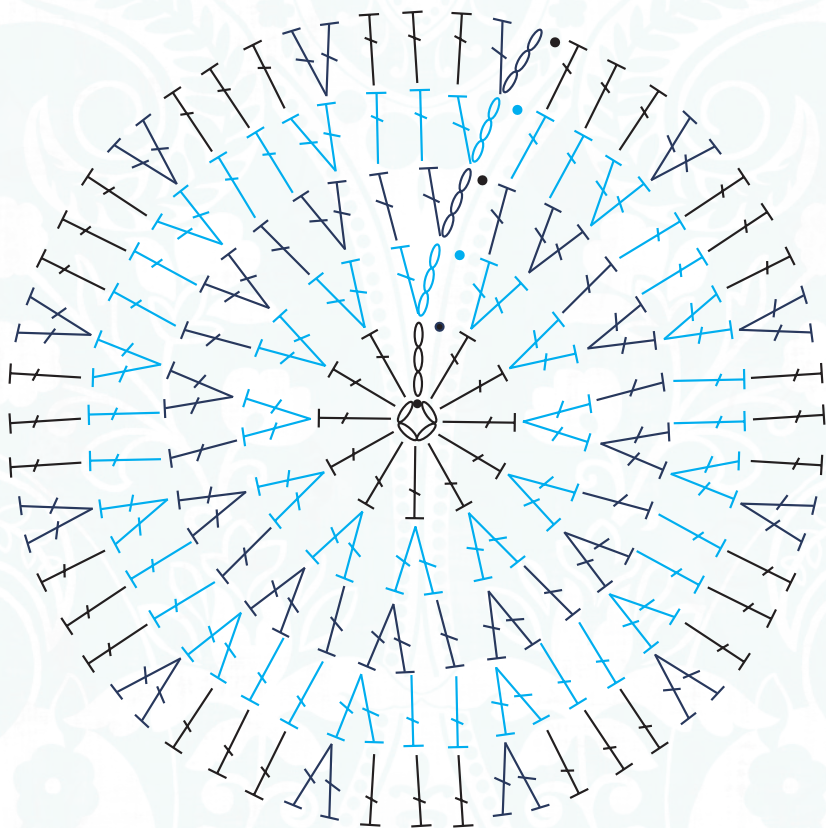


## Stitch Key

- - slip stitch (sl st)
- o - chain (ch)
- + - single crochet (sc)
- V - shell

# knapsack or never

granny circle chart (bottom)



## Stitch Key

- - slip stitch (sl st)
- - chain (ch)
- ⊥ - single crochet (sc)
- ⊥ - double crochet (dc)

## Strap

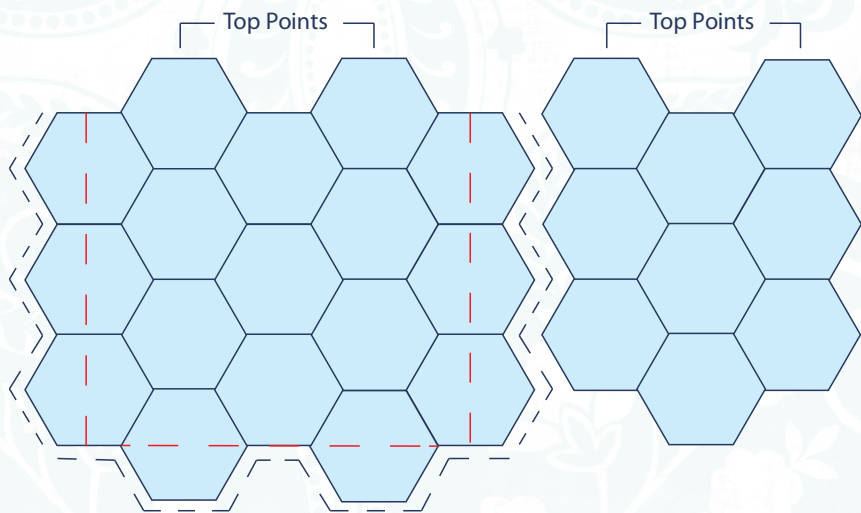


# hue do you love

diagram A

Panel A

Panel B



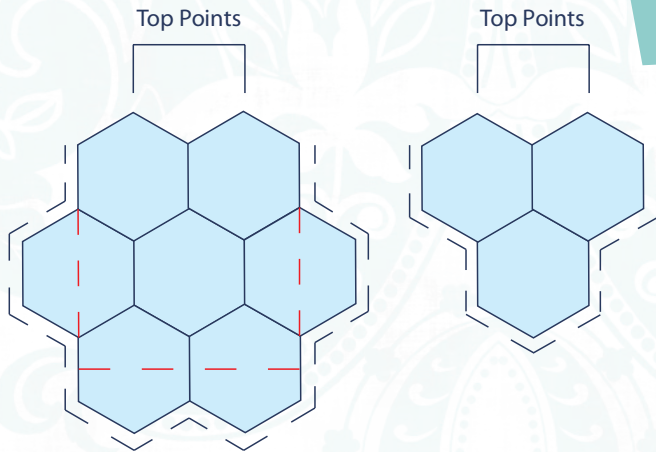
Panel A folds at red dotted lines to create sides and bottom of bag.

Panel A

Panel B

# dream come blue

diagram B



Panel A folds at red dotted lines to create sides and bottom of bag.

WE HAVE MADE EVERY EFFORT TO ENSURE THAT THE PROVIDED PATTERNS ARE ACCURATE AND COMPLETE. WE CANNOT, HOWEVER, BE RESPONSIBLE FOR HUMAN ERROR, TYPOGRAPHICAL MISTAKES OR VARIATIONS IN INDIVIDUAL WORKMANSHIP.