



IS IT A BIRD?

IS IT A PLANE?

Look again—it's your favorite kid wonder in the coolest DIY costume in town. We have tips, templates and sewing instructions to help you get this easy disguise up, up and away.

we need a hero

{CREATIVE INSPIRATIONS *free* FROM HOBBY LOBBY.}



All Eyes

The first rule in the superhero handbook? Protect your secret identity. Here's one way to do it: Embellish a ready-to-go felt mask with a handmade glitter applique. Ta-da! No phone booth required.

Cuff Stuff

For a thrifty take on ultimate superhero style, make a pair of power cuffs from fabric paper. It's sold by the sheet, and it's durable enough to make it through trick-or-treat night—and into the dress-up box.

Fly Guy

For a cape that looks cool coming and going, finish things off with a superhero applique. You can make your own from ready-to-cut iron-on transfer sheets. Just follow the manufacturer's instructions to add your design to the fabric.

 Read on for templates and sewing instructions.

Superhero Cape Instructions:

NOTES:

- Seam allowance is 5/8" unless otherwise stated.
- Always pin fabric in place before sewing.



Right
Side



Wrong
Side

1. Cut one piece of red satin and one piece of blue satin 36" W x 46" H (can be made smaller or larger depending on child's size).
2. With right sides together, stitch red and blue pieces together at top of cape. See diagram A.
3. Measure down 1 1/2" from seam on right and left sides, and mark with disappearing marking pen. Begin stitching at mark all the way around cape, leaving an approximately 5" opening at bottom of cape. Stop seam at other mark. See diagram B.
4. Use 5" opening to turn cape right side out. Press seams and press cape.
5. Sew a straight line from right 1 1/2" opening to left 1 1/2" opening across top of cape. This creates a channel for the ribbon to pass through. See diagram C.
6. Attach a safety pin to the end of 1 yd of blue ribbon, and then thread through channel at top of cape.
7. Use iron-on adhesive to close opening at bottom of cape.

Diagram A:
(step 2)

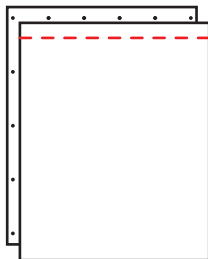


Diagram B:
(step 3)

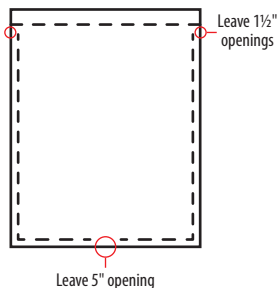
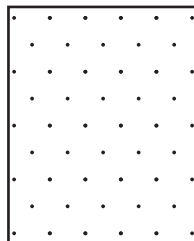
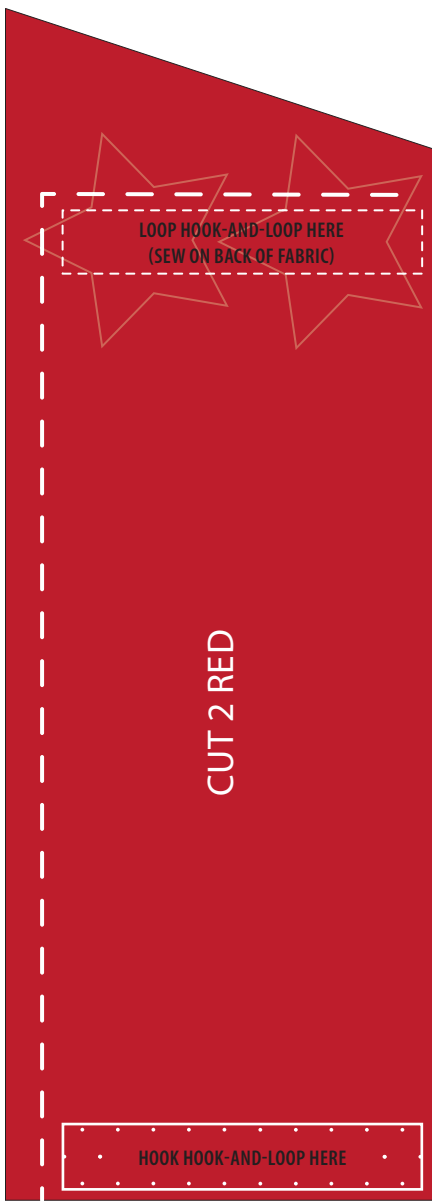


Diagram C:
(step 5)

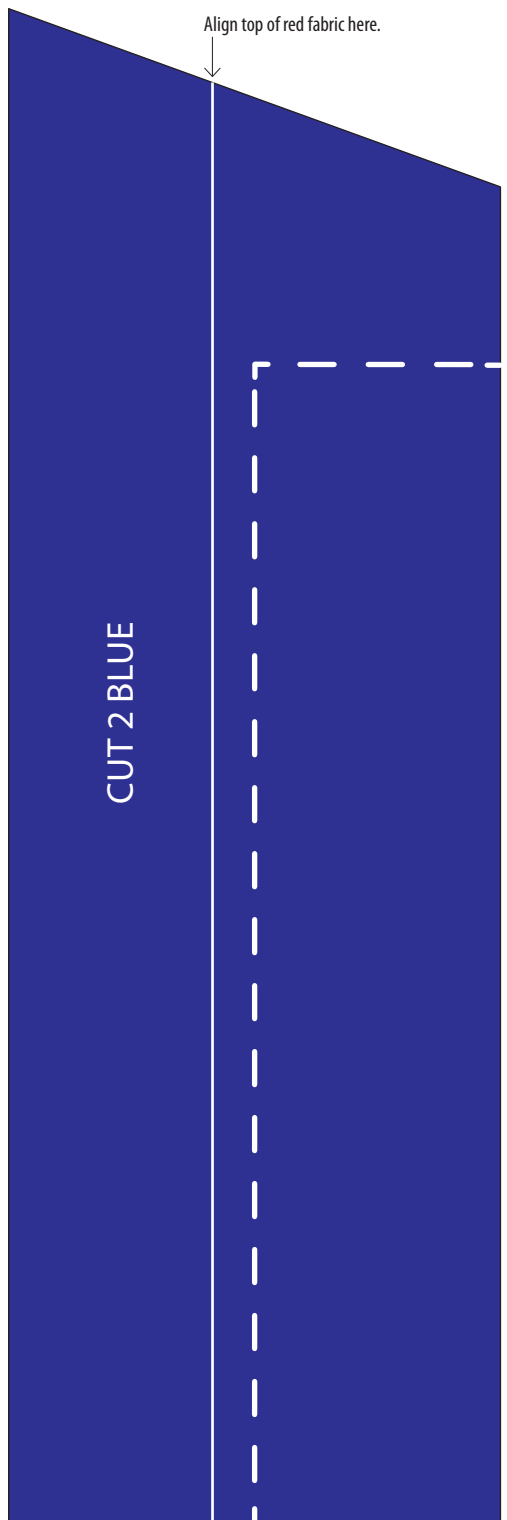


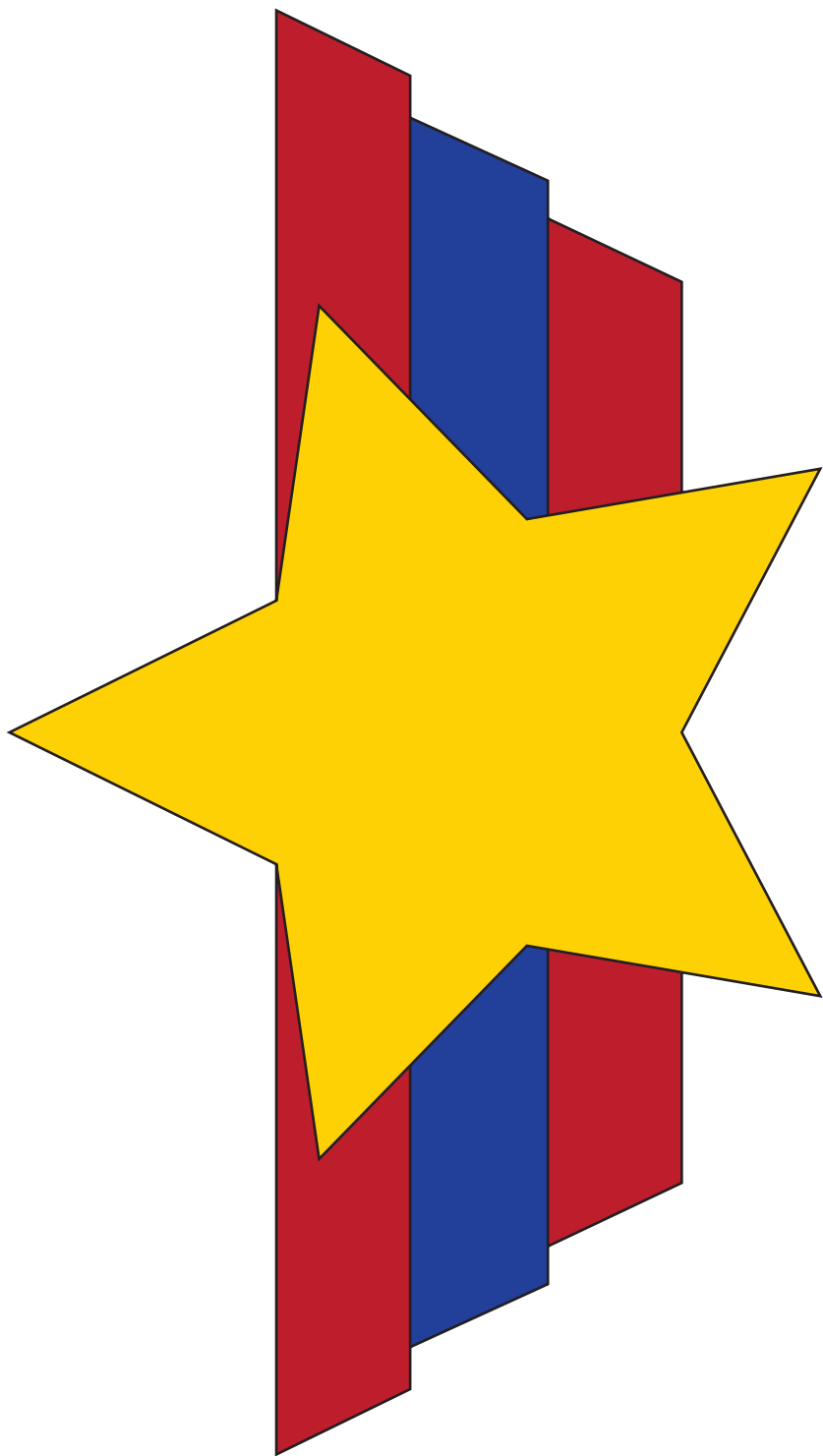
Superhero Cuff Instructions:

1. Enlarge 155% for full size.
2. Cut 2 red pieces and 2 blue pieces. Make sure wrong sides of fabric are together when cutting to make a right and left cuff.
3. Layer and align right red piece on top of right blue piece, and then stitch the two pieces together as indicated by stitch marks on template.
4. Add hook-and-loop closures as shown on template.
5. Hot glue 2 stars to right side of red fabric, as shown on template. Repeat all steps for left cuff.

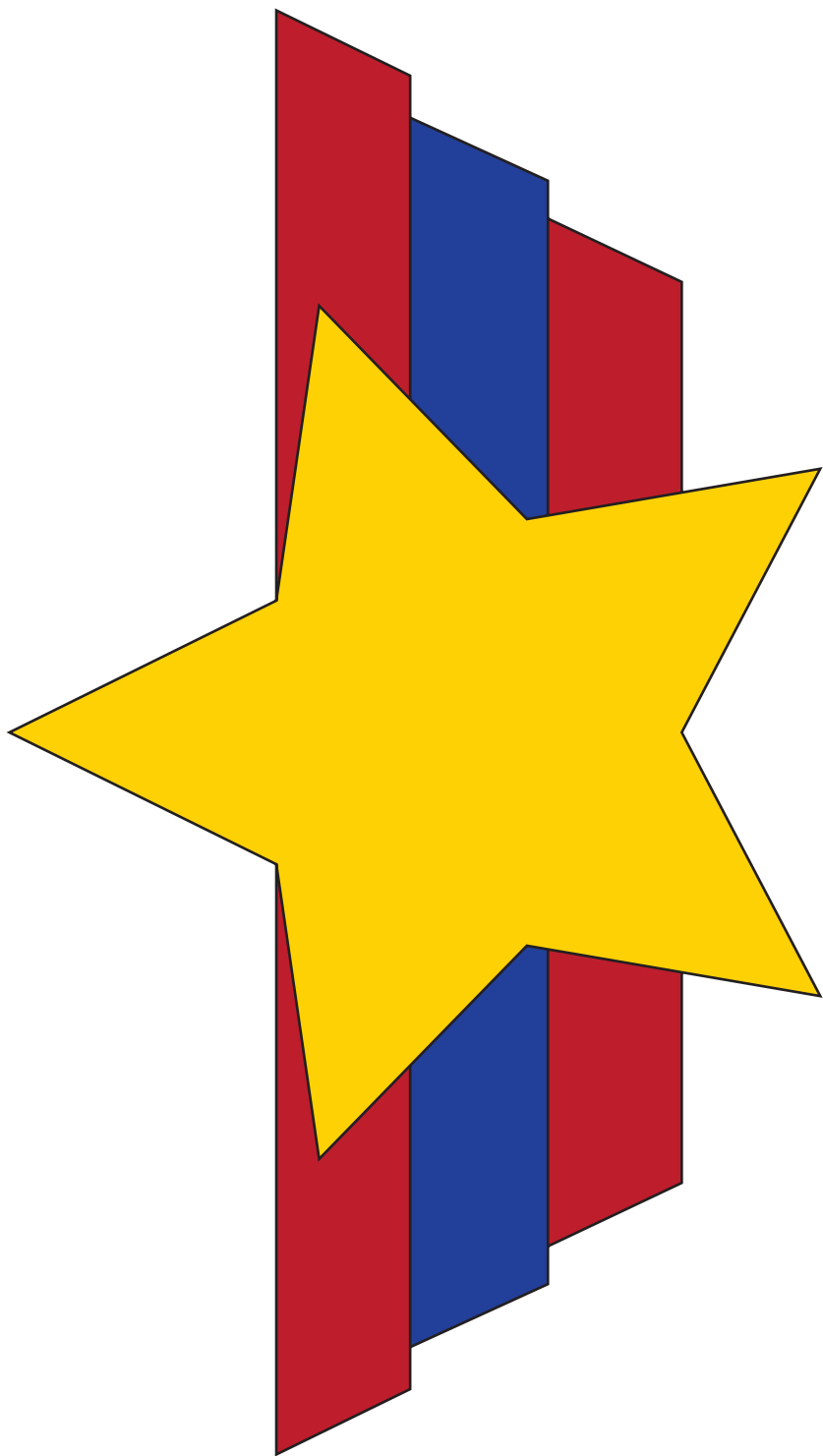


SUPERHERO CUFFS
(enlarge 155% for full size)





SUPERHERO CAPE SYMBOL
(enlarge 200% for full size)

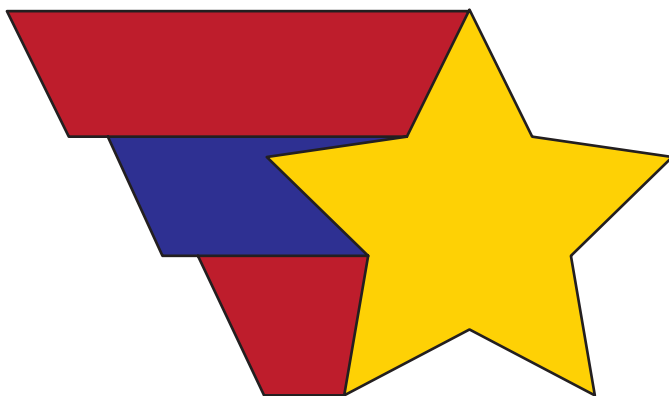


SUPERHERO T-SHIRT SYMBOL
(enlarge 135% for full size)

SUPERHERO HAT SYMBOL



SUPERHERO MASK SYMBOL



SUPERHERO MASK SYMBOL

