

Subtle COLORS AND
ENDLESS *versatility*
MAKE THESE BELOVED BLOOMS
A *wedding staple* FOR
BOTH MODERN AND
TRADITIONAL BRIDES.

love and lilies

{CREATIVE INSPIRATIONS *free* FROM HOBBY LOBBY®}



Regarding Lily

Classic? You can bet your gorgeous white gown on it. But even so, calla lilies don't mean a parade of seen-it-a-million-times arrangements. These unbelievably versatile blooms can do anything from sweet to elegant to downright modern. It all comes down to how you choose to use them.



Around the Bend Sidestep traditional pomp and circumstance with a centerpiece that stops a little shy of full-on modern. In this case, tangles of curved stems (they're no trouble to bend) lend circular softness to a group of sleek square vases. The center vase gets height from a playful hobnail cake plate—that's another sure way to add whimsy to a look like this.



Among the Petals This cascading lily chandelier is the heart of our cutting-edge reception tablescape. It's built on a 10" x 20" picture frame, and it's strung with hundreds of crystal-clear icicle lights. Creamy white callas provide the wow for the breathtaking design. To learn how to string them together, scroll to page 6.





SAY *"I do"*
 TO CALLA
 LILIES AND
 CREATE
 THE *perfect*
 ACCENTS FOR
 ANY STYLE
 OF WEDDING
 DÉCOR, FROM
casual TO
elegant AND
 EVERYTHING
 IN BETWEEN!

» *Night Life*

Dim the overhead lights and watch your handiwork shine. What's lush and lovely at a daytime reception turns downright exotic after dark. And it'll make you want to pinch yourself. Don't—it really does look that good.

» *Day Glow*

In the sun, the va-va-voom is traded for elegant (but not understated) garden style. The look reads "delicate" in the daytime. And that's big a plus for a bride who's aiming for slightly more traditional décor.



Cascading Calla Chandelier

SUPPLIES:

- 935-19" Mini Calla Lilies
- 10" x 20" Picture Frame
- 5 Braided Photo Wire & Screw Hanger Kits
- 2 Boxes Clear Icicle Lights
- 2 Rolls Invisible Cording
- 54 Gem Garland
- 1 Roll White Satin Ribbon
- Double-Sided Adhesive Sheets
- White Spray Paint
- Primer
- Pencil
- Ruler
- Drill
- Staple Gun
- Wire Cutters
- Beading Needle
- Scissors
- Pliers



1. Prime and paint both sides of the picture frame.
2. When the frame is dry, place it facedown on your work surface. Drill holes at even intervals along the back of the frame to accommodate the hanging hardware.
3. Install the hardware (wire and screw hanger kit). Then hang the frame, making sure it's level.
4. Staple the lights to the front of the frame (this will be the side facing down). Attach the strand to one

side, and then move to the other, making a zig-zag pattern across the frame.

5. Apply 1" strips of double-sided adhesive to the back of the frame (side that is facing up).
6. Using wire cutters, clip the heads from the calla lilies.
7. Thread the needle with a 36" length of invisible cord—be sure to tie about 5-6 knots in the same spot to prevent the cord from pulling through the flower.



6.



7.

8.



9a.



9b.



9c.



11.



12.



8. Begin sewing through the calla lily heads, as close to the base as possible. You'll string six heads, sewing through the middle and coming out the back.

9. Leave about a 2" gap in the cord, and add 11 more lilies. This time, insert the needle through the back of the lilies, coming out through the middle. When you've strung all 11 lilies, knot the cording to keep them from sliding off. You've now completed one strand of lilies.

10. Repeat steps 8-9 until you've made enough lily chains to cover the entire frame.

11. Drape each lily chain over the frame. The side with six lilies should hang on the outside, and the side with eleven lilies should hang in the inside.

12. Drape the gem garlands over the frame, between the lily chains.

13. For a finished look, apply another layer of double-sided adhesive to the frame, on top of the clear cording. Place satin ribbon on top of the adhesive.

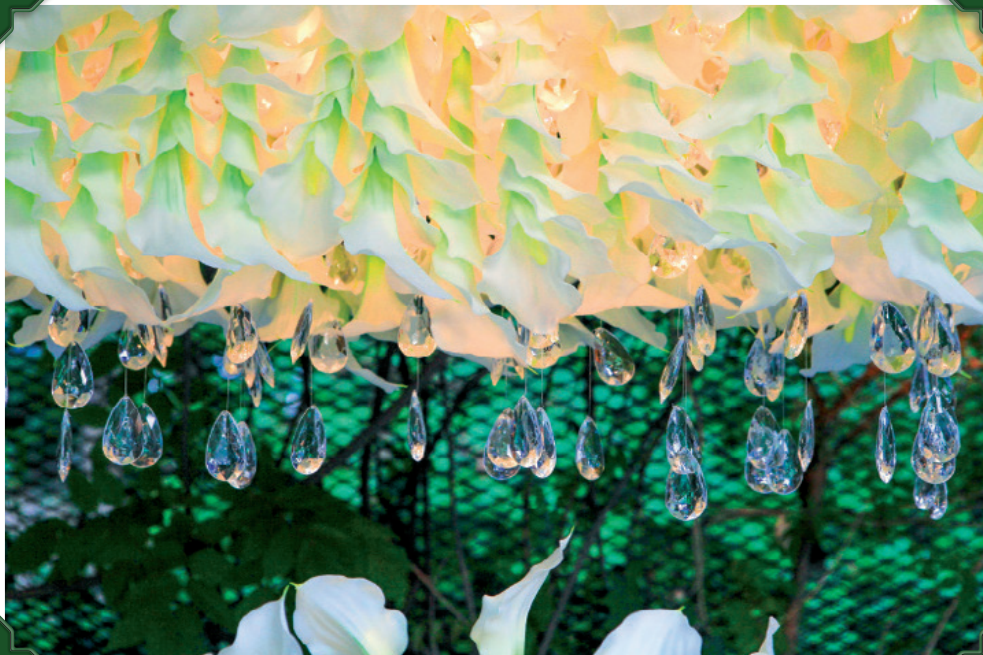
MAKE YOUR WEDDING DAY SHINE WITH THIS *beautiful, cascading lily chandelier*. IF YOU'RE LOOKING FOR *unforgettable*— YOU'VE FOUND IT!

» *See the Light*

Staple mini lights across the picture frame in a crisscross pattern. Enclosed by four walls of gorgeous white callas, the lights take on a distinctive golden glow—one that will wow your guests like nobody's business.

» *Be a Gem*

Drape drippy gem garlands (sold near our wedding accessories) between each lily chain. They'll reflect the glow of the mini lights, and they'll add a touch of wedding-worthy twinkle. Gorgeous!





Stemmed In

Long-stemmed calla lilies were ideal for creating a nature-inspired container to hold our elegant arrangement. We used double-sided adhesive to secure the stems to a glass vase. Then we embellished it with sheer ribbon and sparkling rhinestone trim, found in the Fabric Department.

The Guests



» *Boutonnière in Bloom*

Lovely lilies aren't just for the ladies. To make these groom-worthy boutonnières, simply remove the stem from a vivid purple calla lily and glue the bloom to a pussy willow branch. Then wrap a narrow leaf around the bundle and glue it in place. Finish off your classy creation with a simple gem.

» *Work of Heart* To keep the flowers in place, we first filled a vase with floral foam. To accent the height of the vase, we hot glued gorgeous lilies side-by-side and filled in between the stems with rhinestone chains for a touch of bling.





Bundled Bliss What if calla lilies grew along country roads? One look at this romantic bridal bouquet, and your wedding guests will swear they do. The trick to the just-gathered look is mixing sculptural callas with rustic grasses and a few might-have-come-from-the-garden blooms.



» *Blushing Blooms*

Romance blooms in pink—ask any blushing bride. That's why coral calla lilies are a natural choice for tying-the-knot décor. We put some on a welcoming wreath: wreath frame, sheet moss, organza ribbon and lilies, clipped from the stems and hot glued into place. Then we stitched some to the ring pillow.

» *Lace & Grace*

Add a touch of color to an otherwise neutral ring pillow with a pair of blushing calla lily stems. We wrapped ours with rustic jute. Then we tacked them to the pillow with strong cotton thread, hiding the stitches in the twine.



©2012 Hobby Lobby® - Photography by Sanford Mauldin

www.hobbylobby.com •    • Floral - 286567

DO NOT ALLOW CHILDREN TO COMPLETE PROJECTS ALONE. ADULT SUPERVISION REQUIRED.