



Keep Your Shirt On!

*What can you do with the shirt off your back? We'll show you!
Turn simple tuxedo shirts and basic bow ties into fresh fashion,
fun accessories, and sweet home décor.*

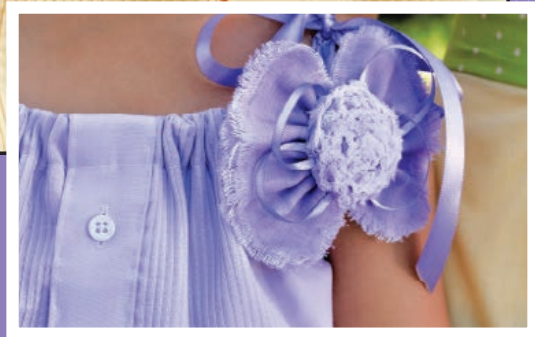
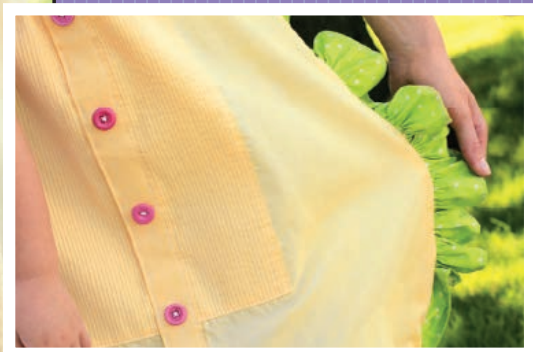


All Dressed Up

It's a shirt dress of another kind! This sweet, pillowcase-style frock was made from an XXL tuxedo shirt. We first dyed the fabric purple. Then, we followed McCall's pattern #5797, modifying it slightly by adding a ruffle along the hem.



≈ **Apron Strings** No pattern was needed for this sweet little apron. We dyed our tuxedo shirt a cheery yellow before cutting it to a serviceable size. A change of buttons...a coordinating ruffle...a simple tie...and we were done!



≈ **Fast Flower** Never waste a shirt cuff—that's what we always say! That's why we turned ours (cut off when making the dress) into a sweet frayed flower! Each gathered side of the blossom is made from a single cuff. And the center of the bloom? That's more cuff fabric, braided and coiled.

» **Ready Ruffle** We thought this dress looked best with a ruffle! This one is made from the sleeve of the tuxedo shirt. Notice the color variation? We left the fabric in the dye for a longer period of time, allowing it to take on a deeper shade of purple.





Top Notch A little less formal and a little more chic. It's all in the modifications! We created a gathered scoop neck, using the space between the second and third buttons as our cutoff point. Then, we changed out the buttons and shortened the sleeves, trimming them with an edgy floral print.



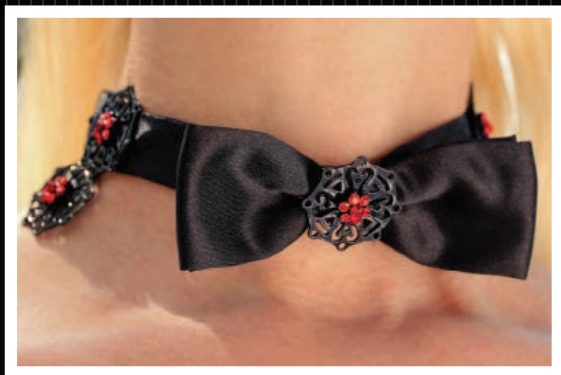
Quick Change We're all for adding a little edge. And in this case, we did it with a permanent fabric marker. That's right, who says you shouldn't get ink on your clothes? The pattern shown is freehand, but you could easily look to stencils for the perfect personalized design.



Chic Choker

It's time to be up to your neck in tuxedo-style fashion. You can start with a quirky bow tie choker! Simply stitch a large jump ring to the base of the tie, as shown. Then, attach the pendant of your choice.

» **So Bow** Here's another idea! Stitch a filigree pendant to the center of the bow tie. Then, link together more pendants to stitch onto the sides. It's a quirky silhouette... but it's elegant too!



« **Cuff Quest** This bow tie became an elegant bracelet! And it was so easy to do! We pinned on a pretty brooch—that's right, just unpin and replace when you're ready for a new look. Then, we twined it around the wrist. **Tip:** You may wish to replace the standard bow tie clasp with something prettier. We have lots of options available in the Jewelry Department.



Bags &
Totes
& Pillows too!



≈ **In the Bag** A little seafoam goes a long, long way. You can't deny that when you see this chic tuxedo shirt bag. The piece is based on two styles using Simplicity pattern #2685. We dyed the fabric a nostalgic seafoam green. And we paired it with a whimsical paisley print.

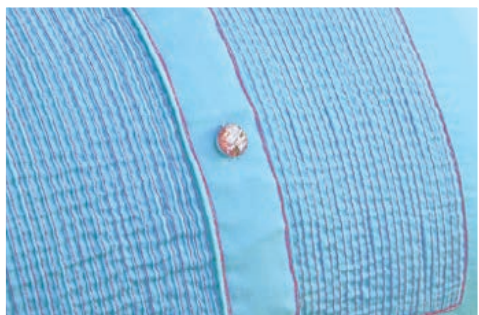


≈ **Vote Tote** Sure it's a shirt, but nobody can tell you how to wear it! So, let's turn it into a bag instead! Just add fabric dye and some pretty paisley cotton. The look is a modified version of Simplicity pattern #2617.

Fast Frills

Here's a little pearl for your pillow collection! This piece is positively posh—and it's all in the ruffle! We had more than enough fabric to accommodate a 14" x 14" pillow form. We used the scraps to create the frilly, torn-edge detail.





» **Dual Detail** What's the secret to one-of-a-kind tuxedo shirt style? Try these hip tricks: Dye the fabric to match your décor, stitch over existing seams with contrasting thread, or simply change out the buttons. This pillow features all three techniques!



» **Around the Block** Tuxedo shirts aren't short on pleats. And that's great for our color-blocked pillow! Try dyeing each section a different vibrant hue—we left one panel white for contrast. Then, seal the deal with some bold decorative stitches.



« **Vine Divine** Freshen up your formerly formal wear with a sweet, embroidered design. Use a fabric marker with disappearing ink to draw in a simple freehand pattern. Then, follow with a needle and embroidery thread. Love it!

Wash and Wear Time for your delicates to take a dip? Just a few quick stitches will turn a tuxedo shirt into a lovely lingerie bag! Embellish with embroidery...and let the existing buttons function as the closure.



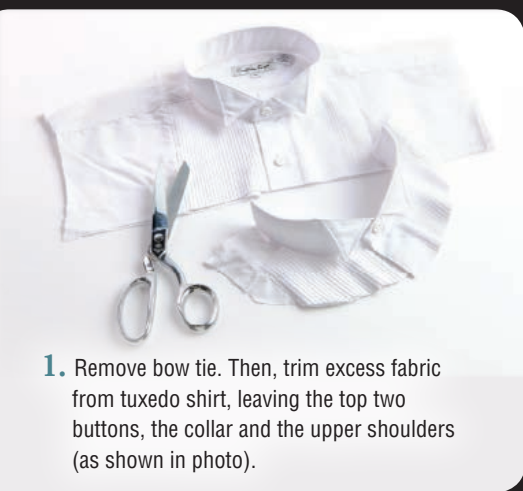
« Pinned In

These pins are certainly in! What else could they be, perched on this nifty tuxedo shirt pincushion? **Create your own “stick and store” masterpiece by following the simple step-by-step instructions on the next page.**



supplies:

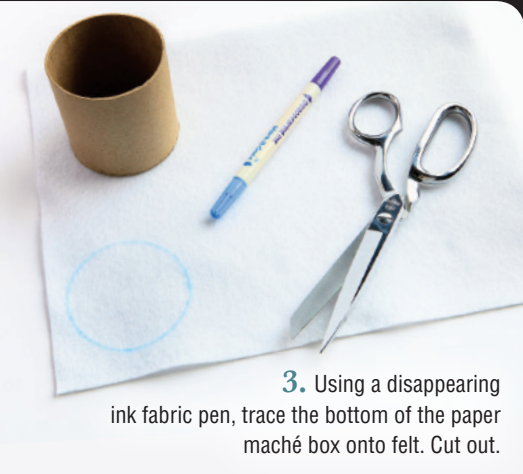
- Tuxedo Shirt
- Cylinder-Shaped Paper Mâché Box
- Coordinating Fabrics of Your Choice
- Disappearing Ink Fabric Marker
- Craft Sand
- Polyester Batting
- Felt
- Fusible Web
- Iron
- Scissors
- Hot Glue Gun



1. Remove bow tie. Then, trim excess fabric from tuxedo shirt, leaving the top two buttons, the collar and the upper shoulders (as shown in photo).



2. Cut a circle of fabric to cover the top of the pin cushion. Ours measured approximately 6 1/2".



3. Using a disappearing ink fabric pen, trace the bottom of the paper mâché box onto felt. Cut out.



4. Pour sand into the box to weight the pin cushion. Then, work in sections to hot glue the circle of fabric to the top of the paper mâché box. Insert polyfill as you work.

5. Continue gluing and stuffing until you've created the desired shape.



6. Wrap the shirt collar around the base of the cushion as shown. Remove excess fabric at back and bottom of shirt as needed. Hot glue at sides and bottom of box to secure.



7. Use hot glue to adhere felt circle to the bottom of the cushion to create a clean, finished appearance.



8. Follow the manufacturer's instructions to iron fusible web to the back of the fabric you've chosen for the bow tie.



9. Cut three strips of fabric. One strip should measure approximately $4\frac{1}{4} \times 1\frac{1}{2}$ "; one strip should measure approximately $9 \times 2\frac{1}{2}$ "; and one strip should measure approximately $10 \times 2\frac{1}{2}$ ". Fold in the sides of each strip, making the raw edges meet at the center. Remove fusible web liner and iron to fuse.



10. Wrap the 10" strip around the collar, as shown. Hot glue to secure. Fold the 9" strip into a tie shape, as shown. Wrap the $4\frac{1}{4}$ " strip around the tie, hot gluing to secure. Then glue completed tie to the pincushion.