



We have all the supplies you'll need, and we've provided detailed instructions inside!



KNIT A BEAUTIFUL HOODED DUSTER FOR YOU, THEN WHIP ONE UP FOR LITTLE FIDO TOO!

two of a kind
{CREATIVE INSPIRATIONS *free* FROM HOBBY LOBBY.}



» nothin' but knit

You want to keep it hip, but you want to make it cozy. That's great, because this stunning, hand-knitted duster is the best of both worlds! The detailed design has can't miss it texture—it features chevron and flame patterns—and it sports a trendy little hood! See material list and complete instructions on pages 7-9.

2

INTERMEDIATE

Long Sweater Hoodie (for her)

sizing:

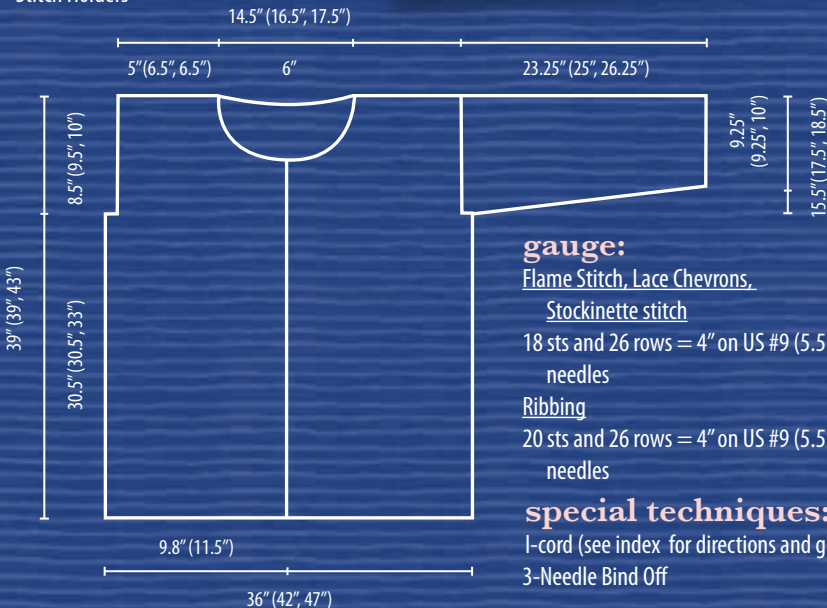
Pictured: Misses Size Small (2/4),
(Medium (8/10), Large (12/14))

finished measurements:

Bust/Hip 36" (42", 47")
Length 39" (39", 43")

materials:

- I Love This Wool® Naturals Pure and Simple 100% Wool 4 oz/113g 220yds/201m 9(10,11) skeins #20 Umber
- 32" length circular knitting needle, size US #9 (5.5mm)
- Set of US #9 (5.5mm) double-pointed needles
- One 2²/₃" button
- Cable needle
- Tapestry needle
- Stitch Markers
- Stitch Holders



gauge:

Flame Stitch, Lace Chevrons,

Stockinette stitch

18 sts and 26 rows = 4" on US #9 (5.5mm)
needles

Ribbing

20 sts and 26 rows = 4" on US #9 (5.5mm)
needles

special techniques:

I-cord (see index for directions and glossary)

3-Needle Bind Off

long sweater hoodie instructions

Back

With #9 needle, CO 90, (106, 118) stitches. Work in P2, K2 ribbing to last 2 sts, end P2. Continue in ribbing for 2", decreasing 8(8, 12) sts evenly on last WSR. 82(98, 106) sts. Work two rows in reverse Stockinette stitch. Keeping first and last st as selvedge, begin 8-st Flame Chart, repeating 10(12, 13) times across. Work through 18 rows of Flame Chart, then repeat chart 6(6,7) times more.

Horizontal Ribbing

Row 1: (RS) Knit
Row 2: Purl
Row 3: (WS) Knit
Row 4: (RS) Knit
Row 5: Purl
Row 6: (WS) Knit.
Repeat these 6 rows 2 more times.

Bodice

Work 6 rows Stockinette.
Work 6 rows of Chevron Lace, repeating 10(12,13) times across.
Repeat these last 12 rows to shoulder.
AT THE SAME TIME, when piece measures 5"(5", 6") from the horizontal ribbing, begin armhole shaping.

Armhole Shaping

BO 4 sts at the beginning of the next 2 rows.
BO 3 sts at the beginning of the next 2 rows.
Decrease 1 stitch each side every RSR 3(3, 4) times. 62 (78, 84) stitches
Continue as set until armhole measures 8½"(9½", 10"), changing to Stockinette stitch 1" before shoulder (for ease of seaming). Leave all stitches live on holder and set aside.

Left Front

NOTE: for Left Front, stitches 17-20 of Zigzag Bobble Chart are replaced by a 4-stitch I-cord edging (see Special Techniques).

With #9 needle, CO 50 (58, 66) stitches.
Row 1: (setup row) (RS) K2, *(P2, K2)* repeat * to * 8(10, 12) times, P5(2, 5), K2, P5(8, 5), K4, return last 4 sts to left needle, K4 (I-cord edge).
Row 2: (setup row) (WS) Slip 4 sts purlwise, work all sts as presented (K the knits and P the purls).

Begin Zigzag Bobble Chart

Work 30(38, 46) sts as set, begin 20-st Zigzag Bobble Chart starting on Row 19(1, 7) of chart, work to end as set.
Continue as set until piece measures 2", decreasing 5(5, 9) sts evenly in the K2, P2 ribbing section on the last WSR. 45(53, 57) sts

Keeping last 20 sts of row as set for the bands, discontinue ribbing and work 2 rows reverse Stockinette stitch.

RS: Keeping last 20 stitches as set for bands, K1(selvedge), begin Flame Chart Row 1 repeating 3(4, 4.5) times across. Continue as set until 18 rows of Flame Chart have been worked 7(7, 8) times in total.

Work 18 rows Horizontal Ribbing as for Back, keeping last 20 sts as set for bands.

Bodice

Keeping last 20 sts as set for bands, work 6 rows Stockinette and then 6 rows of Chevron Lace chart.
Repeat these last 12 rows to shoulder.
AT THE SAME TIME, when piece measures 5"(5", 6") from the horizontal ribbing, begin armhole shaping.

Armhole Shaping

BO 4 sts at the beginning of next RSR.
BO 3 sts at the beginning of next RSR.
Decrease 1 stitch at the beginning of every RSR 3(3, 4) times. 35 (43,46) stitches
Continue as set until armhole measures 6½"(7½", 8"), ending after a RSR.

Neckline

(WS) Work across 20 band stitches, place them on a holder, work to end of row as set. 15(23, 26) sts.
Continue as set until armhole measures 8½"(9½", 10"), changing to Stockinette stitch 1" before shoulder (for ease of seaming). Leave all stitches live on holder and set aside.

Right Front

NOTE: for Right Front, stitches 1-4 of Zigzag Bobble Chart are replaced by a 4-stitch I-cord edging (see Special Techniques).

With #9 needle, CO 50 (58, 66) stitches.
Row 1: (setup row) (RS) K4, return last 4 sts to left needle, K4 (I-cord edge), P5(8, 5), K2, P5(2, 5), *(K2, P2)* repeat * to * 8(10, 12) times, end K2.
Row 2: (setup row) (WS) Work all sts as presented (K the knits and P the purls) to last 4 stitches, bring yarn to front and slip 4 sts purlwise without working them.

Begin Zigzag Bobble Chart

K4 (I-cord as set previously), begin 20-st Zigzag Bobble Chart starting on Row 7(13, 19) of chart, work to end as set.
Continue as set until piece measures 2", decreasing 5(5, 9) sts evenly in the K2, P2 ribbing section on the last WSR. 45(53, 57) sts

Keeping first 20 sts as set for the bands, discontinue ribbing and work 2 rows reverse Stockinette stitch.

RS: Keeping first 20 stitches as set for bands, begin Flame Chart Row 1 at stitch #1(1, 5) repeating 3(4, 4.5) times across, end K1(selvedge). Continue as set until 18 rows of Flame Chart have been worked 7(7, 8) times in total.

Work 18 rows Horizontal Ribbing as for Back, keeping first 20 sts as set for bands.

Bodice

Keeping first 20 sts as set for bands, work 6 rows Stockinette and then 6 rows of Chevron Lace chart beginning at stitch #1(1, 5).
Repeat these last 12 rows to shoulder.
AT THE SAME TIME, when piece measures 5"(5", 6") from the horizontal ribbing, begin armhole shaping on next WSR.

Armhole Shaping

BO 4 sts at the beginning of next WSR.
BO 3 sts at the beginning of next WSR.
Decrease 1 stitch at the end of every RSR 3(3, 4) times. 35 (43,46) stitches
Continue as set until armhole measures 6½"(7½", 8"), ending after a WSR.

Neckline

(RS) Work across 20 band stitches, place them on a holder, work to end of row as set. 15(23, 26) sts.
Continue as set until armhole measures 8½"(9½", 10"), changing to Stockinette stitch 1" before shoulder (for ease of seaming). Leave all stitches live on holder and set aside.

Sleeves (make 2)

With #9 needle, CO 46 (46, 50) stitches.
Work in P2, K2 ribbing to last 2 sts, end P2.
Work in ribbing as set until sleeve measures 2", ending after a WSR.

RS (setup row): K6(6, 8), K2tog, K4, P2, K2, P2, K2, P2tog, P2, P2tog, P4, K2, P2, K4, K2tog, K6(6, 8). 42(42, 46) sts
WS (setup row): Work all stitches as presented.

RS: Continue pattern as set across first 11(11,15) sts, work Zigzag Bobble Chart row 1 over next 20 sts, work to end as set.
WS: work as set, continuing the Zigzag Bobble Chart up the center of the sleeve. AT THE SAME TIME, begin sleeve shaping.

Sleeve Shaping

(RS): Inc 1 st each end of this row and every following 4th row a total of 14(18, 19) times. 70(78,84) sts
Work even until piece measures 18"(19", 20") or desired length to armhole.

Cap Shaping

BO 5 sts at the beginning of next 2 rows. 60(68,74)sts

long sweater hoodie instructions (continued)

BO 3 sts at the beginning of next 2 rows.
 54(62, 68) sts
 Dc 1 st each end of every RSR 12(14, 16)
 times. 30(30, 40) sts
 BO 2 sts at beginning of next 4(2, 6) rows.
 22(26, 28) sts
 BO 4 sts at beginning of next 2 rows.
 14(18, 20) sts
 BO remaining sts.

Assembly and Finishing

Place Fronts and Back together with right sides facing. With #9 needle, use 3-needle bind off to join 15(23, 26) sts of each Front to the same corresponding stitches of the Back, leaving the center 32(32,32) sts on holder for the hood.

Hood

With RS facing, attach yarn to Right Front band, work across 20 sts of band as previously set, PU & Knit 14 sts along Right Front neck, work across 32 stitches of Back, PU & Knit 14 sts along Left Front neck, work across 20 sts of Left Front band. 100 sts (WS): work all sts as presented. RS: Increase 1 st each side of hood every RSR 8 times as follows:
 Work 20 band sts, K1, inc-R, work to last 21 sts, inc-L, work to end. (116sts)
 Continue as set until hood measures 10" from neck, placing a marker between stitches 58 and 59.
 (RS): Work as set to 3 sts before marker, SSK, K1, SM, K1, K2tog, work to end.
 Continue until piece measures 13", ending

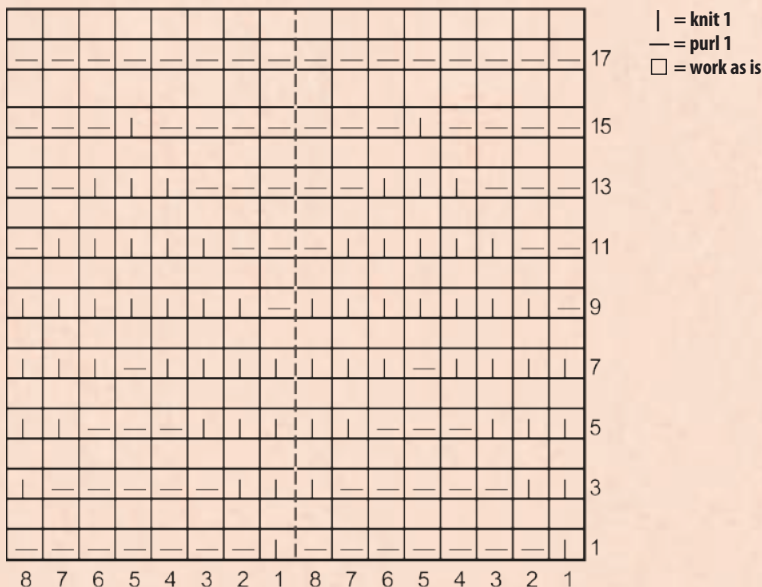
after Zigzag Bobble Chart row 6 and 18. Divide stitches evenly between two needles and with RS facing each other, run tapestry needle through 4 sts of each side's I-cord to fasten off, then work 3-needle bindoff in pattern to join rest of hood together.

Sew sleeves into armholes, seam sleeves, seam body sides. Weave in all ends. Wash and block if desired.

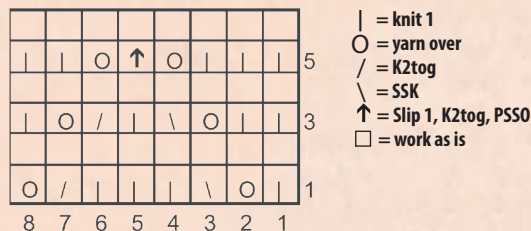
Button Placement

Place buttons where desired along Left Front. If a bobble is in the way, simply push it through to the wrong side and sew your button over the spot. Make a 9" I-cord for each button, attaching at least 2" of each end of it inside the Right Front for stability.

Flame Chart

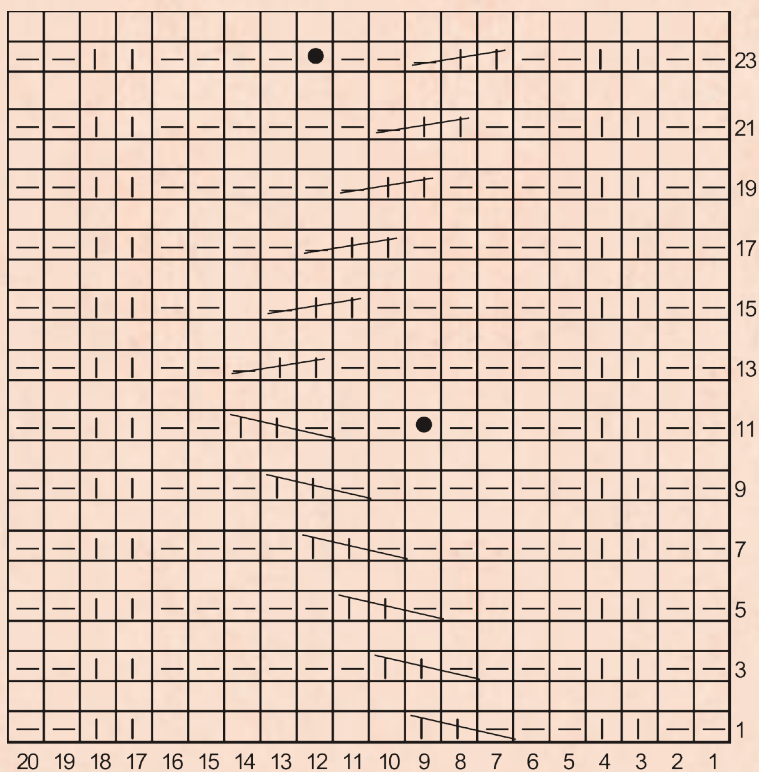


Lace Chevron Chart



long sweater hoodie instructions (continued)

Zigzag Bobble Chart



- | = knit 1
- = purl 1
- = work as is
- ≡ = 3-st left across
- ≡ = 3-st right across
- = bobble



puppy love Fido is in love with this adorable matching sweater, complete with a pooch-size hood. Materials and instructions for this delightful doggie design are available on pages 3-5.

2

INTERMEDIATE

Doggy Sweater
(for Him)

sizing:

Medium-sized dog

finished

measurements:

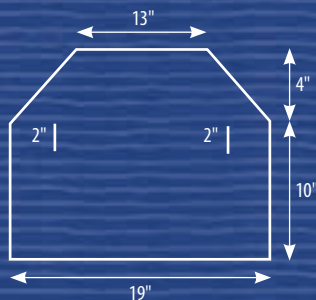
Chest 19"

Length 14"

Neck 13"

materials:

- I Love This Wool® Naturals Pure and Simple 100% Wool
4 oz/113g 220yds/201m
1 skein #20 Umber
- 32" length circular knitting needle, size US #9 (5.5mm)
- Set of US #9 (5.5mm) double-pointed needles
- Cable needle
- Tapestry needle
- Stitch Markers
- Stitch Holders



gauge:

Flame Stitch, Lace Chevrons, Stockinette stitch

18 sts and 26 rows = 4" on US #9 (5.5mm) needles

Ribbing

20 sts and 26 rows = 4" on US #9 (5.5mm) needles

special
techniques:

3-Needle Bind Off

glossary:

St st: Stockinette stitch

Reverse st st: Reverse stockinette stitch.

RS purl and WS knit

RS: Right side (public side of work)

WS: Wrong side

CO: Cast on

BO: Bind off

PU & K: Insert needle into edge of fabric and pull a loop up and through onto the needle

K2tog: Knit two stitches together

SSK: Slip 1, Slip 1, Knit the two stitches together through the back legs

3-st left cross: Slip 2 stitches to cable needle and hold in front, P1, K2 from cable needle.

3-st right cross: Slip 1 stitch to cable needle and hold in back, K2, P1 from cable needle.

Bobbles: In one stitch, K in front loop, then back, then front, then back to create 4 sts, turn, P4, turn, K4, turn, P4, turn K4, then pass 3 sts one by one over 4th stitch to complete bobble.



doggie sweater instructions

Back

With #9 needle, CO 96 stitches. K2, work in (P2, K2) ribbing over next 36 sts, P2, K2, P2, K2, P8, work in (K2, P2) ribbing to last 2 sts, K2.

WS: work all sts as they appear.

RS: Work as set over first 38 stitches, work Row 1 of 20-st Zigzag Bobble Chart, work as set to end.

WS: Work as set, decreasing 12 sts evenly in ribbing section (6 each side). 84 sts

RS: K2, P29, work center panel 20 sts as set, P29, K2.

WS: Work sts as they appear.

RS: K2, P2, begin 8-st Flame Chart, repeating 3-1/2 times across, work center 20 sts as set, work 8-st Flame Chart starting on Stitch #5 repeating 3-1/2 times across, P2, K2. Work through last row of chart.

Horizontal Ribbing

Keeping first and last sts and center 20-st panel as set, work horizontal ribbing on both sides of panel:

Row 1: (RS) Knit

Row 2: Purl

Row 3: Knit

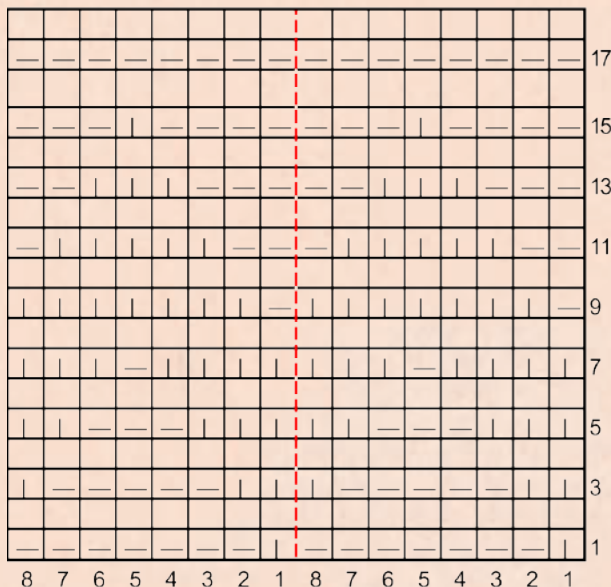
Row 4: (WS) Knit

Row 5: Purl

Row 6: (WS) Knit.

Repeat these 6 rows 1 more time.

Flame Chart



Hood

(RS): K2, P2, K8, place these 12 sts on a holder, K36 sts in Stockinette stitch discontinuing center panel, place last 12 sts on a holder. Work center 36 stitches only until hood measures 4", placing marker between stitches 30 and 31 on last WSR.

(RS): K to 3 sts before marker, SSK, K1, SM, K1, K2tog, K to end.

(WS): Work sts as they appear

Repeat last two rows twice more. 30 sts Distribute stitches on 2 needles with right sides facing and use 3-needle bind off to fasten together.

Assembly and Finishing

(RS): Reattach yarn to right side of hood, PU & Knit 38 stitches along hood, then K8, P2, K2 from left side holder.

(WS): Turn and work in P2, K2 ribbing across left side, hood, and then across held stitches of right side, end P2. 62 sts Work ribbing for 2 more rows, then BO loosely in pattern.

Legs

With #9 DPs, PU & K 24 sts evenly around leg opening, distributing among 3 needles. Work in K2, P2 ribbing for 3 rounds, then BO loosely in pattern. Repeat for other leg opening.

Weave in all ends. Sew belly seam from lower ribbing through neck ribbing. Wash and block if desired.

| = knit 1
— = purl 1
□ = work as is

