



MODERN RESIN
GOES
Vintage

It's time to play with your creative side! You choose the shape, style, color and everything in between! Craft vintage-style trinkets, artsy baubles, and antique-worthy gems, all using the magic of resin casting.

» **petal pusher** Found a pretty flower? Make a mold! Use molding putty, sold near the resin supplies, to turn found objects or existing jewelry into beautifully detailed, custom molds. That's how we made this gorgeous antique-style resin bloom. The shape comes from an off-the-shelf brooch (*sold in the Jewelry Department*).

» **bold gold** Want to add interest to your resin jewelry designs? Go for translucent color—we love this honey hue—and fill it with unexpected flecks and speckles. This piece has gold glitter, flecks of artist's pastels and bits of shimmering gold leaf.



head space A cameo can be so sweet! We made a mold of a vintage ring so that we could create this matching bracelet. We filled the head and shoulders first, using a toothpick to work the resin into the fine lines. After that resin hardened, we slowly poured in the amber background.





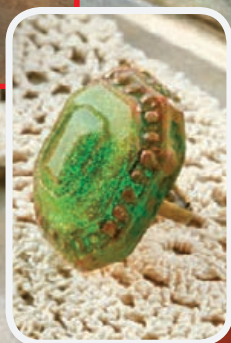
WHITE SPACE

Try your hand at a creamy, dreamy display. This look was achieved with pearling powder, added to the resin according to the manufacturer's instructions. We added interest to the finished pieces using simple, rustic silver jewelry findings—flower cap beads and swirly connectors.



« **silver lining** A little leaf (silver leaf, that is) gave lots of life to this simple green pendant. It gives a high-end look to the artfully blended resin. Love the color? We tinted two batches of resin and swirled them together with a toothpick.

» **leaf love** This look certainly has a ring to it. And it's all about artful application of gold leaf. Use it to create artsy appeal by applying it around the edges. Or use it for added interest on a simpler design.



« **all that glitters**

Go on a sparkle spree! This chunky, vintage-style ring glows with a generous dusting of gorgeous gold glitter! For a similar look, fill your mold with tinted resin. Then, sprinkle in the glitter—it will automatically sink to the bottom of the mold.

» **all ears** Silver leaf leaves a lasting impression on these understated stud earrings. Paired with sophisticated, swirly blue resin, it adds a modern edge to the simple yet stunning design.

» **jade parade** These sleek, jade-inspired beads were made in a jewelry mold. And the milky green color comes from a mixture of white and green dyes, added to the resin according to the manufacturer's directions.





OUT OF THE BLUE

Same color... two totally different looks! That's what's so great about crafting with resin. You can choose your go-to hue and match it to your mood. Feeling formal?

Make a beautiful, two-toned bloom! Want fun and flirty? Try sparkly glitter and a metal filigree.



STONE AGE

Mimic precious stones with a simple mold and the perfect, gem-inspired color. This look comes from a basic jewelry mold and translucent blue dye. And what's the secret to the fabulous shimmer? Bits of dichroic glass suspended in the resin.



trinket trove

Let's steer a little towards steampunk. The designs above are classic pocket watches, altered with quirky industrial-style collages. Suspended in the resin are antique photographs, bits of glitter, and a collection of cog and gear embellishments.

« **had a blast** This collage-style piece has an explosive point of view. Mechanical embellishments and confetti-style glitter make the perfect artsy debris. Love the mysterious smoky backdrop? For a similar look, gently mix drops of opaque resin into translucent resin.



» **about time** Clockwork-inspired embellishments lend steampunk style to this unusual bezel pendant. To get the look, apply a waterslide transfer (*sold near the polymer clay supplies*) to a layer of resin that's been tinted white. Then, add clear resin and embellishments.





RING TRUE

Put your finger on (well . . . in) some custom-made fashion. That's right, these are resin rings! We made a bevy of these custom-designed trinkets, using both handmade and off-the-shelf molds. Then, we glued them to ring bases, available in the Jewelry Department.





^ **at a clip** Coated in clear resin, this rose has a certain shine. The silk bloom looks like delicate porcelain, but it's lightweight enough to wear. We glued it to a simple metal hair barrette, available in the Jewelry Department.



hue view It's coordination to die... wait... dye for! There's no fear of going matchy-matchy here. Zone in on a hip hodgepodge of interesting shapes and sizes. Since you can dye your pieces any way you please, your look will come together in the color.



BANGLE BLISS

It's resin in the round, folks. And it's just so easy! We offer bangle bracelet molds in a variety of thicknesses. For a look you'll love, experiment with dyes, glitters and other imaginative embellishments. It's as simple as "mix, pour and cure."





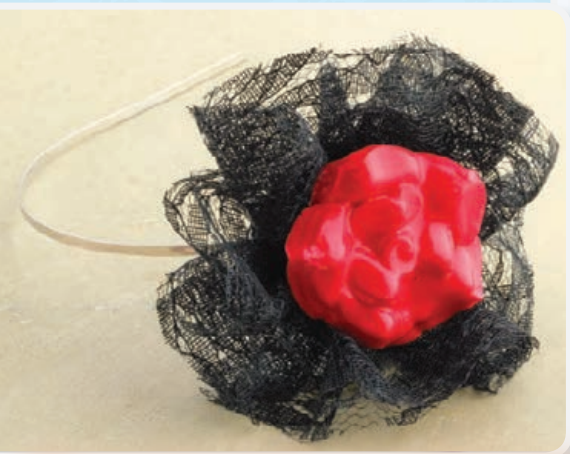
SWEET DEAL

This cupcake has a secret. It's a teeny-tiny trinket box! The mold was made from a miniature cake pan (available in the Card and Party Department). See the confetti-like icing? We filled the resin with oodles of candy sprinkles to create the colorful design.



» **take heart** Ear we are! It's a lovey-dovey fashion statement that you can make yourself. The playful earrings were made in a basic, heart-shaped mold. We loaded the delicately tinted resin with iridescent glitter for shimmery, sugar sweet appeal.

» **lace up** This look is definitely top drawer. Why? The flower is a duplicate of a rose-shaped drawer pull (available in the Home Accents Department). That's right, we made a mold! We dyed the resin red, and when it had hardened, we added a coat of dimensional gloss for shine. A little lace . . . a simple felt backing . . . and it was ready to grace a simple metal headband.



ring me Ring in a birthday party or a girls' night out with a collection of simple resin rings! How's it done? Find a simple shape to make a mold from, and multiply it times the number of attendees. Then, decorate as desired! **Tip:** This rounded design required filing when it was removed from the mold. Filing makes the resin less glossy, but you can restore the shine with a coat of dimensional gloss.

