



Oh, deer me...

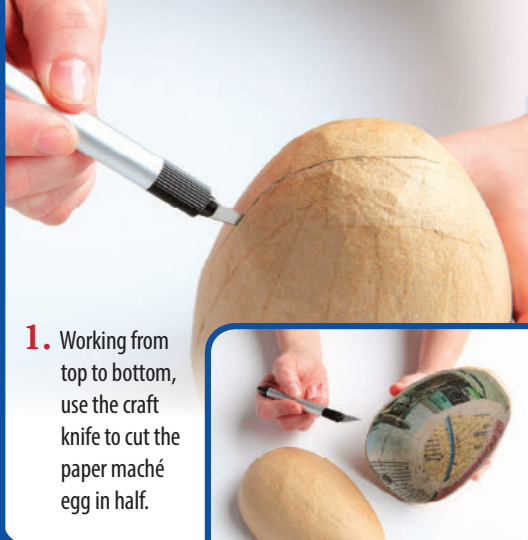


...it's
POP ART
made with foam!

*We'll show you how to make this kitschy
original step-by-step.*

supplies:

- Paper Maché Egg
- Wooden Plaque
- Antler Template (provided)
- Ear Template (provided)
- 1 Brown Foam Sheet (for ears, 8 1/2" x 5 1/2")
- 2 Foam Sheets in Color of Your Choice (for antlers, 12" x 18")
- Double-sided Adhesive Sheets
- Patterned Paper of Your Choice
- Coordinating Acrylic Paint
- Découpage Medium
- Pencil
- Permanent Marker
- Scissors
- Craft Knife
- Foam Brush
- Floral Stem Wire
- Hot Glue Gun



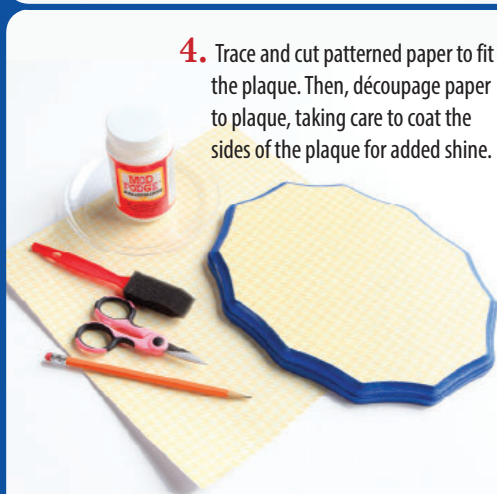
1. Working from top to bottom, use the craft knife to cut the paper mache egg in half.



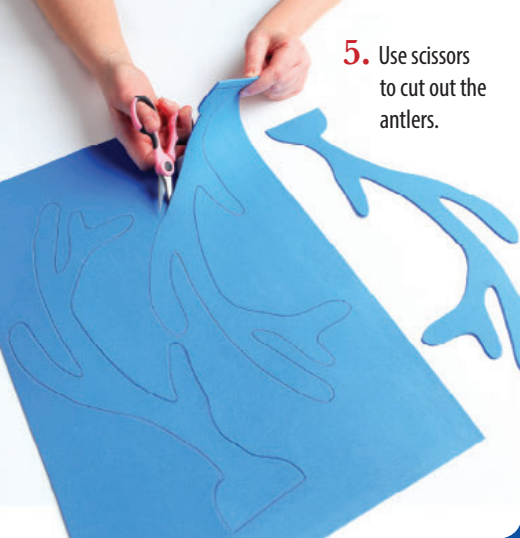
2. Paint one half of the egg with acrylic paint. Then, paint the plaque to match. Allow to dry.



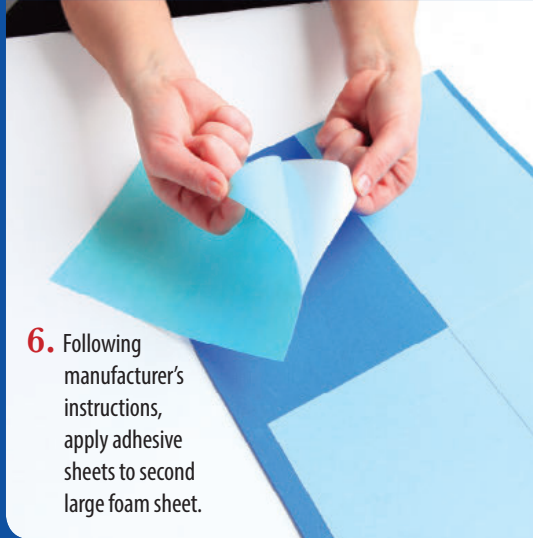
3. Use pencil to trace the antler template onto one of the large foam sheets. Flip the template to create a set of antlers.



4. Trace and cut patterned paper to fit the plaque. Then, découpage paper to plaque, taking care to coat the sides of the plaque for added shine.



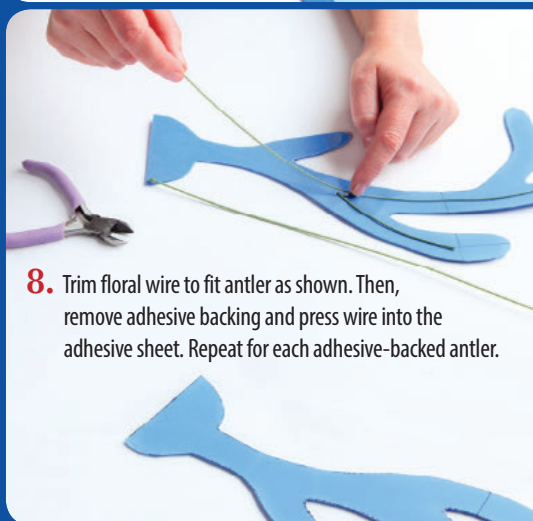
- 5.** Use scissors to cut out the antlers.



- 6.** Following manufacturer's instructions, apply adhesive sheets to second large foam sheet.



- 7.** Use permanent marker to trace another set of antlers directly onto the adhesive backing. Cut out.



- 8.** Trim floral wire to fit antler as shown. Then, remove adhesive backing and press wire into the adhesive sheet. Repeat for each adhesive-backed antler.



- 9.** Now, match a non-adhesive antler to each wired antler. Press firmly into place, sandwiching the floral wire between the layers.



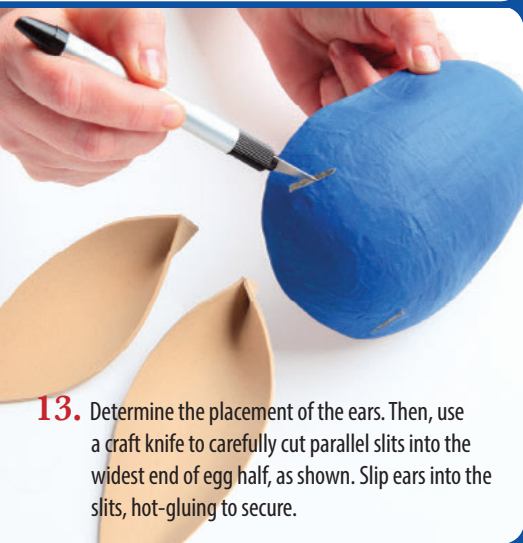
- 10.** Use a pencil to trace the ear pattern onto the brown foam—be sure to trace two.



11. Cut out ears.



12. Fold in bottom edges of ears, as shown. Secure with hot glue.



13. Determine the placement of the ears. Then, use a craft knife to carefully cut parallel slits into the widest end of egg half, as shown. Slip ears into the slits, hot-gluing to secure.



14. Position antlers on plaque as desired. Hot glue to secure.



15. Position head over antlers, and hot glue into place. Bend antlers as desired.



16. Here's the finished project! So cute... you'll want to make an entire set!

DO NOT ALLOW CHILDREN TO COMPLETE PROJECTS ALONE. ADULT SUPERVISION REQUIRED.

